

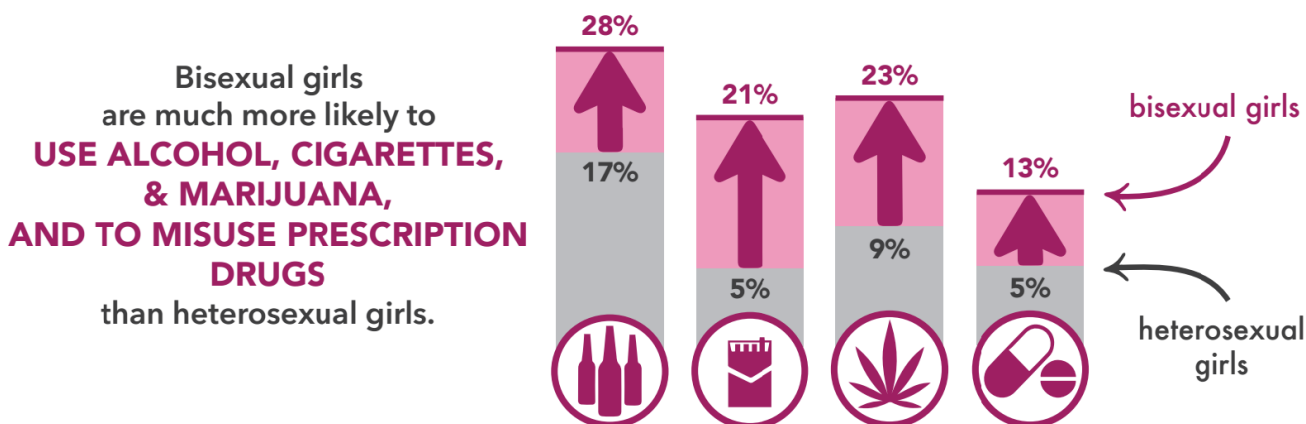
What's The (data)Point?

Turning Data Into Action

LGBTQ+ pride month was celebrated throughout the month of June. Understanding the impact of substance use on this community remains important *all year long*.

DATA

About 1 in 12 Minnesota 9th and 11th grade girls identify as bisexual. Data from the Minnesota Student Survey shows:



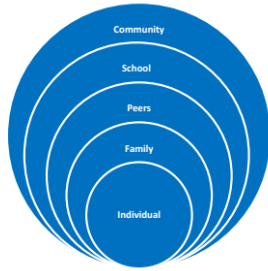
There are ways we can help! See the positive impact caring adults and involvement in school activities can have on this statistic by [clicking here](#). View more data on this topic [here](#).

RESOURCE

LGBTQ+ youth and young adults who feel cared about and experience a sense of belonging are at reduced risk for substance abuse.

Families, peers, schools, organizations, and the entire community can show LGBTQ+ youth and young adults they are cared about. [This two-page brief](#) provides ideas for providing this support in each of these contexts. It also offers tips to create a comprehensive and thoughtful plan for carrying this out.

Where can communities intervene to enhance supports for LGBTQIA youth and young adults?



TAKE ACTION

Review the ideas outlined in the resource featured above.
Learn more about these ideas, and how you may implement them, with the suggested action steps below.

Support Caregivers

Find and share support resources for caregivers of LGBTQ+ youth from [Outfront Minnesota](#). Use the [website directory](#) to search by location or resource type.



What Youth Can Do

- Learn what it means to [be an Upstander](#).
- Learn [what kids can do](#) and [what teens can do](#) to create a safe environment for everyone.

School Climate

- Watch [this webinar](#) to learn about GSA (Gender-Sexuality Alliance) establishment, an evidence based strategy to improve school climate. [Click here](#) for support in getting a GSA started and to connect LGBTQ+ students to leadership opportunities.
- Offer [training for faculty and the student body](#) on tips for creating a supportive school environment.

Community Involvement

Offer an [LGBTQ+ specific diversity training](#) for your workplace. Are you part of a community coalition?
Offer to coordinate this training in partnership with employers in your community.

Think through your ideas with someone before you start! Contact your [Regional Prevention Coordinator](#).

.....

What's The (data)Point? is a monthly e-news feature, distributed to *MN-Prev* subscribers.

It brings together the data, information, and personalized support that is available to you from the following:



State Epidemiological Outcomes Workgroup

Minnesota Prevention Resource Center

Regional Alcohol, Tobacco, and Other Drug Prevention Coordinators



Facebook



Twitter



MNPRC.org

Copyright © 2018 Association for Nonsmokers-Minnesota / MNPRC, All rights reserved.

[unsubscribe from this list](#) [update subscription preferences](#)



mailchimp